



The Insider

11th April 2025; issue 558

Our Vision

In our inclusive community,
Each valued individual is taught self-belief
We are resilient and optimistic,
Caring for ourselves and our peers.
We are Children of God, with hope,
Awe and wonder in our hearts.

Our Bible verse: *Be kind to one another, tender-hearted, forgiving one another, as God in Christ forgave you.*
Ephesians 4:32

Our Values: Respect Friendship Honesty Kindness

Our motto: Respect. Believe. Succeed

Dear Parents and Carers,

As we reach the end of a busy Spring term, we pause to reflect on everything that has been achieved. From marvellous mathematicians to flourishing authors; exceptional creativity in art and technology; as well as sporting achievements, there has been much to celebrate across the whole curriculum. Well done to all pupils for their continued hard work and dedication to learning. This week, we saw a record number of pupils enjoying their Rewards Afternoon, which was very much deserved.

As a church school, daily collective worship forms an integral part of school life at Walkwood. On Tuesday, our Year 7 pupils shared in an Easter service at the Bridge Church. Thank you to our readers and musicians who led the service and to all our year 7 pupils for their exceptional behaviour throughout. A special thank you also to Father Glenn for welcoming us to the Church; a wonderful experience for all involved.

This week Mrs Timmins will be leaving Walkwood to pursue her career in SEND. I would like to take this opportunity to thank her for her continued hard work and commitment to the children of Walkwood and to wish her every success for the future.

It just remains to wish you all a Happy Easter and to thank you for your continued support.

Mrs Lowe

Key Information for Parents

For information about our school: www.walkwoodms.worcs.sch.uk





Keeping children safe

The following information regards how we continue to ensure that pupils are cared for within our school:

[Early help](#)

[E-safety](#)

[Prevent](#)

[Child Protection](#)

[Attendance](#)

[Safeguarding summary](#)

[Safeguarding policy](#)



This week's winners!

Individual

Year 5 Charlie Rich
Year 6 Charlie Akerman
Year 7 Seth Palmer
Year 8 Kyle Hill



Top Tutor Group

Year 5 JWA
Year 6 AFA
Year 7 PJE
Year 8 FCL



Absences and appointments

Please could parents/carers ensure they contact the school by 9:30am if your child is absent. This can be by phone, email, website or via the Arbor app. School must be contacted **every day** of your child's absence. Please also state the reason for your child's absence, if you state 'unwell' we will contact you to confirm the details of their illness.

If you should need to take your child out of school for an appointment during school time, you **must** provide proof of the appointment. This can be sent by email to the school office. If no proof is received, we will contact you to ask you to provide proof.

Thank you.



Every School Day Counts



94%

Our overall attendance this academic year

Top 3 Tutors



AFa



Congratulations

EDu

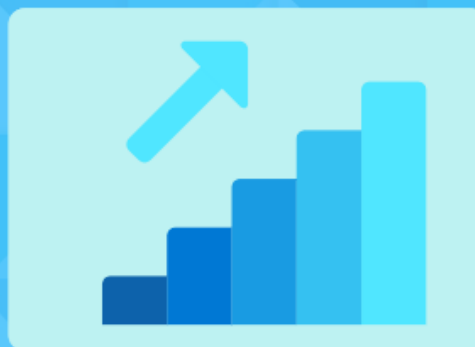


ZBi



Weekly Attendance

Year 5	92%
Year 6	94%
Year 7	94%
Year 8	92%
Whole School	93%



Year to date Attendance

Year 5	95%
Year 6	94%
Year 7	94%
Year 8	92%
Whole School	94%



Well done to AFa for leading the way last week!

Congratulations to everyone, but to AFa and EDu in particular, for being in the top 3 Tutors for the second week in a row. Excellent work and a great inspiration to us all! Remember - every school day counts!



Celebrating attendance

Because attendance matters...





Reading Matters

As we embark upon our Easter holidays, let us remind our pupils of the importance of daily reading. There is no greater predictor of academic success than a child's engagement with reading; that is to say, that when a child chooses to pick up a book and read for pleasure, this will greatly enhance how well they do in their school years and beyond.

Therefore, please do encourage your child to keep up their daily reading of 20 minutes per day, wherever possible, throughout the holiday. Perhaps they can get outdoors and enjoy some reading in the superb spring sunshine!



OUR RECYCLING MISSION!


What's Changing in Schools?

- From March 2025, all schools in England must separate waste into:
-  Recyclable Waste (Paper, plastics, metals)
-  Food Waste (Leftover food and scraps)
-  General Waste (Non-recyclables)
- This is part of a UK-wide effort to reduce waste and improve recycling

RECYCLING

Recyclable Waste Bin – Paper, plastics, tins, cardboard 

FOOD WASTE

Food Waste Bin – Fruit peels, leftover food, tea bags 



GENERAL WASTE

General Waste Bin – Crisp packets, dirty tissues, broken stationery 





Easter Safeguarding @ Walkwood

Currently topping the list of 'Top 10 TV Programmes in the UK Today' on Netflix is a drama called Adolescence. The show follows the story of a 13-year-old boy who is arrested and explores h...

[Go to this Sway](#)

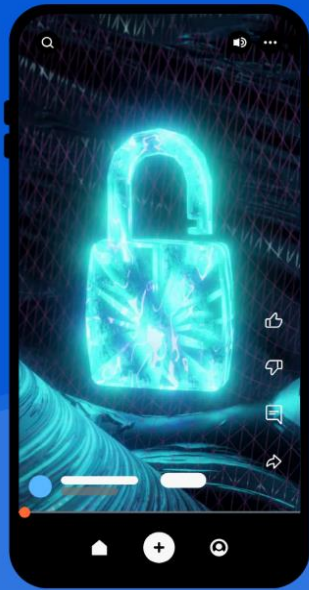


Attention Year 8 Parents!

We understand that moving on to a new school can feel overwhelming for some pupils, so we're offering extra transition workshops in the summer term! These sessions will be facilitated by our WEST (Wellbeing and Emotional Support Team) after school to help ease any worries and support students on their journey. If you'd like to book a place for your child or need more information, please contact the school and speak to your Head of Year or Pastoral Manager.

Let's make this transition as smooth as possible! 🌟

#SupportingOurStudents #SmoothTransitions
#WellbeingMatters



Online Safety Training Opportunity for Parents/Carers in association with The Spires Learning Trust and Brightcore Consultancy at 5pm via Zoom on 10th April 2025
Please check your emails for more information.



Walkwood CofE Middle School Uniform



10% OFF EVERYTHING IN JULY



V Neck Sweat from £14.95



Tie – Royal, Green, Red, Gold £6.50



PE Polo £15.95



PE Shorts £12.95



PE Socks From £6.95



¼ Zip PE Top £25.00



Trousers From £7.00



Skirts From £10.25



Twinpack Shirts/Blouses From £14.50



PLAIN SCHOOLWEAR, BOOK BAGS AND ACCESSORIES

ONLINE ORDERING AT

<https://orchardschoolwear.co.uk/shop/parent/school/122/products>

OR SCAN THE QR CODE AT THE TOP LEFT OF THIS PAGE

COLLECTION IN STORE IS AVAILABLE FREE OF CHARGE



	Before school 8.30-8.45	Breaktime 10.15- 10.30	Lunchtime 12.15 – 1.00pm	After School 3:30pm – 4:45pm
Monday	Library is open – read, quiz or exchange books	Library is open – read, quiz or exchange books	Choir Year 5 and 7 12.50pm – 1.15pm during playground time GLA – Music Room Lunch club (LTI) – Invite only	
Tuesday	Library is open – read, quiz or exchange books	Library is open – read, quiz or exchange books	Lunch club (LTI) – Invite only	
Wednesday	Library is open – read, quiz or exchange books	Library is open – read, quiz or exchange books	Lunch club (LTI) – Invite only	
Thursday	Library is open – read, quiz or exchange books	Library is open – read, quiz or exchange books	Lunch club (LTI) – Invite only Homework club (Computer Room) 12:50 – 1:30pm - FCL	
Friday	Library is open – read, quiz or exchange books	Library is closed	Choir Year 6 and 8 1.15pm – 1.35pm during playground time GLA – Music Room Lunch club (LTI) – Invite only	



Looking ahead



2025	
Friday 11 April	End of Term
Monday 28 April	First day of the Summer Term
Monday 19 – Wednesday 21 May	Year 7 Kingswood Residential
Wednesday 21 May	Pastoral Coffee morning 9:00 – 9:55am
Monday 26 – Friday 30 May	Half Term
Monday 2 June	Staff Development Day
Sunday 29 June- Wednesday 2 July	Year 5 Barton Hall, Devon
Wednesday 2 July	Pastoral Coffee morning 9:00 – 9:55am
Thursday 17 July	Year 8 Drayton Manor
Friday 18 July	End of Term
Monday 1 September	Staff Development Day
Tuesday 2 September	Staff Development Day
Wednesday 3 September	First Day of Autumn Term
Friday 24 October	Staff Development Day
Monday 27 – Friday 31 October	Half Term
Friday 19 December	End of Term
2026	
Monday 5 January	First Day of Spring Term
Monday 16 – Friday 20 February	Half Term
Friday 27 March	End of Term
Monday 13 April	First Day of Summer Term
Monday 25 – Friday 29 May	Half Term
Monday 1 June	Staff Development Day
Friday 17 July	End of Term